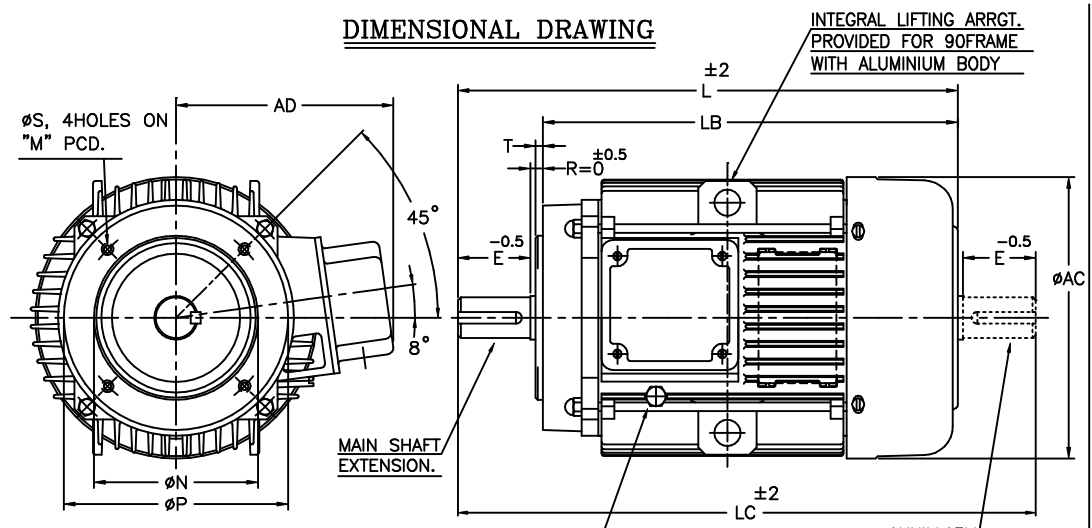


UNMENTIONED TOLERANCES
 LINEAR ABOVE 0 6 315 1000
 DIMENSIONS(S)UPTO 6 315 1000 2000
 (MACHINED)TOL. ±0.2 ±0.5 ±0.8 ±1.2
 ANGLES ± 1/2°

ALL INFORMATION CONTAINED IN THIS DOCUMENT IS CONFIDENTIAL AND THE PROPERTY OF KIRLOSKAR ELECTRIC CO.LTD. REPRODUCING OF THESE IN ANY FORM IS TO BE DONE WITH THE SPECIFIC PERMISSION OF THE COMPANY.

SURFACE ROUGHNESS (MAX) AS PER KSD-02-027
 Ra Um 50 12.5 25 1.6 3.2 6.3 0.2 0.4 0.8 0.8 0.025 0.05 0.1
 OLD NEW
 UNMENTIONED
 CHAM:
 UC:

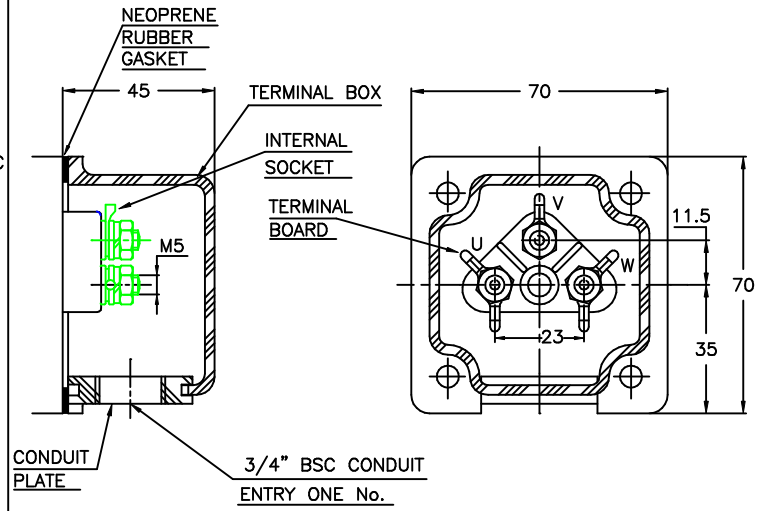
DIMENSIONAL DRAWING



DETAILS OF MAIN & AUXILIARY SHAFT EXTENSION

- NOTE : 1. DIMENSIONS ARE AS PER IS:1231 & 2223
 2. DEGREE OF PROTECTION: IP:55.
 3. TOLERANCE ON 'd' : j6. TOLERANCE ON 'n' : j6.
 4. PROTECTED CENTRE HOLE AT SHAFT EXTENSION AS PER IS:2540.
 "M6 X 16" FOR 'D'- $\phi 19$
 "M8 X 20" FOR 'D'- $\phi 24$
 5. TERMINAL BOX CAN BE ROTATABLE THROUGH 360° IN STEPS OF 90°.
 6. KEY & KEYWAY ARE AS PER IS:2048 & TOLERANCE ON KEYWAY IS P9.

TERMINAL BOX ARRANGEMENT



NOTE: MAX. CABLE SIZE : MAIN-1x3Cx6 sqmm.

SL. NO	FRAME	D	E	F	L	LB	LC	M	N	P	S	T	AC	AD	GA	GD
1	CPM80	19	40	6	270	230	310	100	80	120	M6	3.0	156	130	21.5	6
2	CPM 90S	24	50	8	293	243	343	115	95	140	M8	3.0	178	140	27	7
3	CPM 90L				318	268	368									

Z122606100JR

THIS SUPERSEDES FROM dt AS PER DCN No.....
 THIS SUPERSEDED BY FROM dt AS PER DCN No.....

MATERIAL SPECIFICATION	RAW MATERIAL SIZE	WEIGHT kg	SCALE	
-	-	RM FIN.	NTS	
CASTING/FAB REF.		No.P.S.:-	DRAWN	
USED ON		sd/-	CHECKED	STANDARD
CPM80 & 90		dt:10/01/09	sd/-	APPROVED
TITLE:		dt:10/01/09	sd/-	dt:10/01/09
DIMENSION SHEET		dt:10/01/09	sd/-	dt:10/01/09
KIRLOSKAR ELECTRIC COMPANY LTD. HUBLI-580030 (INDIA)		SHEET ONE OF ONE		

REV.	ZONE	DCN.No.	BRIEF RECORD	SIGNATURE	DATE	PRINTS ISSUED TO
1	-	0122209	REDRAWN IN A NEW FORMAT.	Sd/-	10/01/09	QA MARKETING PRODUCTION
8	7	6	5			

FORM No. 02 201 02B (ISSUE 7)